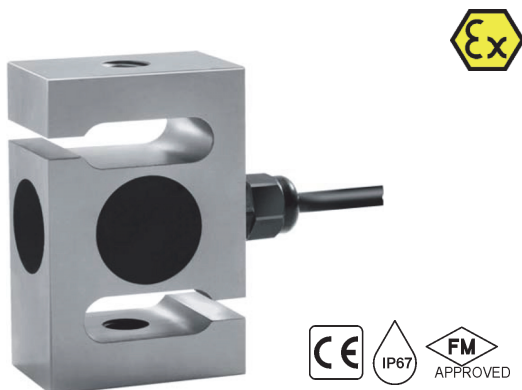


**Product Information**

**DMS-Load-Cell ULB**



- Standard- or Ex-devices
- Measuring range from 0 kg..5000 kg
- Operating temperature -20..+60 °C
- Accuracy 0,05 % (0,02 %)
- Protection class IP67

**Characteristics**

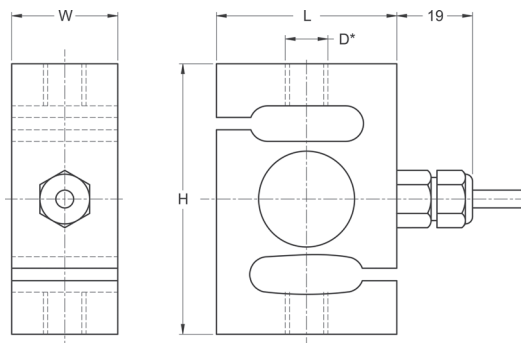
Type ULB is a stainless steel universal load cell which allows for tension and compression loading. Its improved potting makes it suitable for use in industrial environments. The fields of applications lie in the section crane scales and hanging scales, small hopper and tank weighing systems, hybrid systems with lever work, belt weighers and other load carriers with multiple load cells.

The load cell was conceived for nominal loads of 0 kg up to 100 kg and 0 kg up to 5000 kg.

**Technical data**

- Power supply**  
 Bridge supply : 5..15 V DC  
 Operating temperature : -10..+40 °C compensated range  
 -20..+60 °C max.
- approvals : ATEX-approval for Ex-area  
 Zone 0, 1, 2, 20, 21 and 22  
 FM approval
- Bridge resistance : 1100 Ω  
 Output signal : 2 mV/V, exact sensitivity  
 on the type plate
- solation resistance : >5000 MΩ  
 Accuracy : 0,05 % (0,02 %)  
 Repeatability : <0,025 %  
 Zero unbalance : <5 %  
 Max. over-load : 200 %  
 Breaking load : 300 %  
 Connection cable : 6 m, 4 pole, shielded cable (AWG 24),  
 5 mm diameter
- Protection class : IP67  
**Case material**  
 Weight : stainless steel 1.4548 (17-4PH)  
 : weight inclusive package  
 Nominal load 100..1000 kg: ~1 kg  
 Nominal load 2000 kg: ~2 kg  
 Nominal load 3000 kg: ~2,7 kg  
 Nominal load 5000 kg: ~5,3 kg

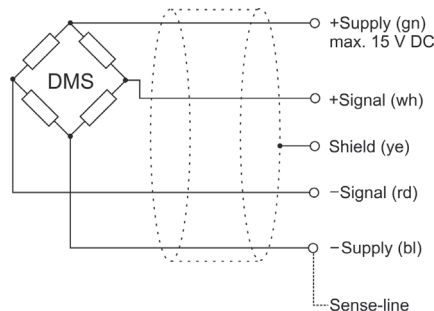
**Dimensions**



Model size	H	L	W	Thread D-M	UNF thread D-U	UNF thread D-H
01	76,2	49	30	M12	1/2-20	-
02	76,2	49	30	M16	1/2-20	5/8-18
03	86,1	76,2	30	M16	5/8-18	-
04	86,1	88,7	40	M20x1,5	3/4-16	-
05	146	91,2	56,6	M24x2	1-12	-

Dimensions in mm

**Connection diagram**



The sense line is used to compensate line resistance from load cell to DMS transmitter. For distances more than 5 m it is recommended to use the sense line.

**Ordering code**

ULB -  1. -  2. -  3. -  4.  5.

1. Design	
00	standard for non-Ex applications
Ex	Ex applications acc. to KEMA 02ATEX 1123X
2. Frame size (see dimensions)	
01	Nominal load 100..500 kg
02	Nominal load 1000 kg
03	Nominal load 2000 kg
04	Nominal load 3000 kg
05	Nominal load 5000 kg
3. Nominal load	
Please state in plain text (note model size)	
100 / 200 / 300 / 500 / 1000 / 3000 / 5000 kg	
4. Options	
00	without option
01	Accuracy 0.02% (instead of 0.05 %)